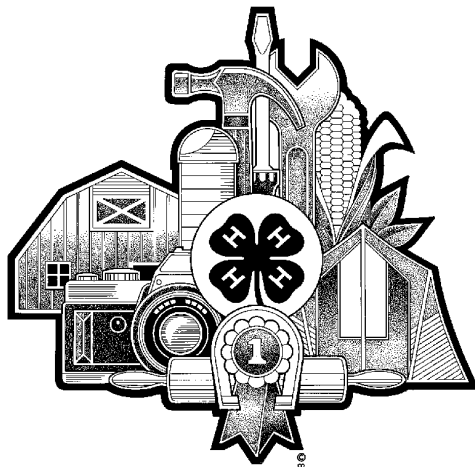




4-H Youth Department



The Manatee County 4-H Youth Development Program is open to all youth between the ages of 5 and 18 regardless of race, creed, color, religion, age, disability, sex or national origin.

Staff can be reached Monday-Friday, 8 a.m.-5 p.m. at 941.722.4524, by fax at 941.721.6744, or by email at Manatee4h@ifas.ufl.edu.



Manatee County Fairgrounds, Palmetto, Florida

4-H Department Member Projects & Club Exhibits
1st Manatee Bank Exhibit Building

4-H Exhibit Check-in (Including Foods & Club Tables)
Saturday, January 7, 2017

Schedule of 4-H Department Activities & Events

Jan. 7, 2017	9 a.m. - 4 p.m.	4-H Exhibit Project & Club Table Check-in
Jan. 7, 2017	6 p.m.	4-H Food Exhibit Judging
Jan. 9, 2017	9 a.m. - 1 p.m.	4-H Project Judging
Jan. 10, 2017	6 p.m.	4-H Fashion Revue
Jan. 23, 2017	9 a.m. - 5 p.m.	4-H Project Exhibit Release

Individual Member Project Entries

Member must be registered in a specific project area no later than **November 8, 2016** to be eligible to show under that project. (Example: to show photography you must be registered in the Expressive Arts or the Visual Arts Project.) If you have questions, call the 4-H Office at 941.722.4524, Monday-Friday, 8 a.m.-5 p.m.

ALL PROJECT EXHIBIT ITEMS MUST BE THE WORK OF THE 4-H MEMBER WITH REASONABLE ASSISTANCE BY PARENT/GUARDIAN OR LEADER.

Fair Ribbon Premiums

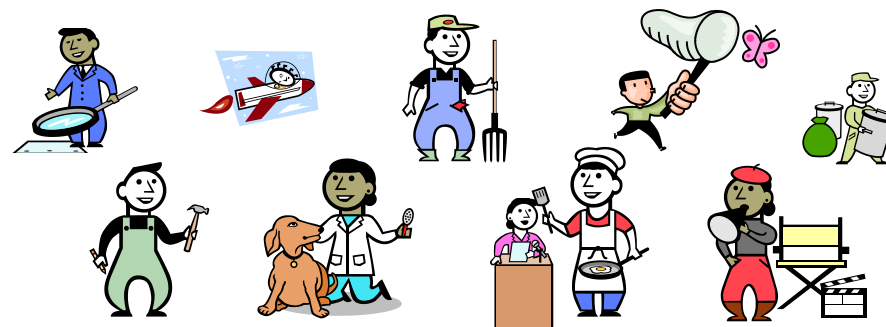
Best of Show (Outstanding).....	\$10
Special Award of Merit (Exhibits nominated for Best of Show).....	\$8
Blue Ribbon Award	\$5
Red Ribbon Award	\$4
White Ribbon Award	\$3
Green Participation Award (Cloverbuds)	\$1



4-H Department Exhibits & Activities

The 4-H Department of the 2017 Manatee County Fair offers many opportunities for 4-H members to display the skills they have learned in their 4-H project involvement over the past year.

Leadership Development	Small Engines (Sciences)
Llamas & Alpacas (Animal Sciences)	Soil & Water Sciences (Environ. Sciences)
Marine Science & Aquatic Sciences (ES)	Sports Fishing (Marine Aquatic)
Meat Science (Animal Sciences)	Shooting Sports (Environmental Sciences)
Money Management (Healthy Living)	SS-Archery (Environmental Sciences)
Outdoor Education (Environmental Sciences)	SS-Hunting (Environmental Sciences)
Performing Theatre Arts (Expressive Arts)	SS-Rifle, Air (Environmental Sciences)
Personal Well Being (Healthy Living)	SS-Rifle, Small bore (Environ. Sciences)
Pets & Pets Care (Animal Sciences)	SS-Shotgun (Environmental Sciences)
Photography (Visual Arts)	Swine (Animal Sciences)
Physical Fitness & Health (Healthy Living)	Veterinary Science (Animal Sciences)
Pocket Pets (Pets)	Visual Arts (Communication Arts)
Poultry (Animal Sciences)	Waste Management (Environmental Sciences)
Quilting (Clothing & Sewing)	Water Education (Environmental Sciences)
Rabbits (Animal Sciences)	Weather & Climate (Environ. Sciences)
Robotics (Science & Technology)	Wetlands (Marine Aquatic)
Safety (Healthy Living)	Wildlife & Habitats
Science Discovery (Science & Tech)	Woodworking (Expressive Arts)
Sewing (Clothing)	Workforce Prep (Workplace Preparation)
Sheep (Animal Sciences)	



4-H Fair Individual Exhibit Categories

Aerospace (Science & Tech)	Drama, Theater (Communication Arts)
Apiary/Beekeeping (Environ. Science)	Earth Sciences (Environmental Science)
Arts & Crafts (Expressive Arts)	Electricity & Electronics (Sci. & Tech)
Astronomy (Science & Tech)	Embryology (Animal Sciences)
ATV Safety (Safety)	Emergency Preparedness (Healthy Living)
Babysitting (Child Dev & Child Care)	Energy (Science & Technology)
Beef (Animal Sciences)	Entomology (Environmental Science)
Bicycle (Science & Technology)	Entrepreneurship-Workforce Prep (FCS)
Breads & Bread making (Food & Nutrition)	Environmental Sciences
Butterflies (Wildlife & Habitats)	Exploring-Discovery 4-H
Cats (Animal Sciences)	Expressive Arts
Child Development & Child Care	Filmmaking (Communication Arts)
Citizenship	Food & Nutrition (Healthy Living)
Citizenship-Community Service	Food Preservation (Healthy Living)
Clothing & Sewing	Forestry (Environmental Science)
Cloverbuds (Exploring 4-H)	Gardening-Flowers (Plant Sciences)
Collectibles (Expressive Arts)	Gardening-Vegetables (Plant Sciences)
Communication & Public Speaking	Gardening & Plants (Plant Sciences)
Computer Technology	Goats-Dairy (Animal Sciences)
Consumer Education (FCS)	Goats-Meat (Animal Sciences)
Container Gardening (Plant Sciences)	GPS/Geospatial (Science & Technology)
Cooking -Food Prep (Healthy Living)	Honey/Apiary (Environmental Science)
Cultural/Global Education (Leadership)	Horse (Animal Sciences)
Dairy Cattle (Animal Sciences)	Horseless Horse (Animal Sciences)
Dairy Foods (Healthy Living)	Insects-Entomology (Environmental Sc)
Dogs (Animal Sciences)	Junior Master Gardener (Plant Sciences)

Official Rules & Regulations Individual Project Entries

Rules and regulations for the 4-H Department were compiled under the direction of the Fair Youth Exhibit Committee of the 4-H Leader Council.

1. The 4-H Department of the Manatee County Fair is open only to bonafide members of the Manatee County 4-H Program who have submitted a 4-H membership online to the 4-H Office on or before **November 8, 2016**. According to item #3 of the Manatee County 4-H Club Policies which states, "For a 4-H member to participate in County, District, and State Level Competitions, the 4-H'er must be enrolled in the Manatee County 4-H Program 60 days prior to the registration of the event, the interview for the trip, etc." Provisions will be made for 4-H clubs forming after November 8, 2016. For a member to be considered officially enrolled in a project area, the 4-H online data system must have a record of the member's enrollment with the project indicated.

2. Each 4-H member may enter up to five (5) entries in each of the project areas in which he/she is enrolled, with the exception of the live animal exhibits. An entry can be an item that the 4-H member has made, constructed or designed. **Entries must reflect knowledge gained through 4-H involvement and must not have been part of a previous non 4-H competitive event.** Entries may include plants, paintings, photographs, scrapbooks, photo albums, essays, videotapes, CD's/DVD's, project game boards, display boxes, craft creations, and food items (freshly made, preserved or frozen). **Items limited to one entry per member are: posters, display boards, display boxes, game boards, essays, and cassette, videotapes, or CD's/DVD's.** These entries should contain sound educational information designed to teach the observer some aspect of the member's studies.

3. 4-H clubs can enter a display box depicting club activities or enter the club table decorating activity. **Both the club display box and the decorated table must be designed, constructed and assembled for display by club members with only minimum guidance by club leaders.**

4. All entries must be the work of the 4-H member. Parents, leaders and family members may give assistance to the member, but the exhibit should be the 4-H member's own work.

5. Do not write the exhibitor's anywhere on the entry.

6. **No live animal exhibits are allowed in the 4-H Exhibit Area except for aquariums which must be set-up and maintained by the exhibitor during the fair.** The Manatee County Fair Board and 4-H assumes no responsibility

for safety and well-being of aquariums or their contents. (All live animal entries are governed by the rules and regulations of the Manatee County Fair Livestock Department and the Fair Youth Livestock Committee. Questions should be directed to the Fair Livestock Committee.)

7. All exhibits must be officially checked in on **Saturday, January 7, 2017 (9am-4pm)** and recorded by the 4-H Office.

8. All exhibits must remain in the 4-H Exhibit Area until release on **Monday, January 23, 2017** between 9 a.m. and 5 p.m. The 4-H Office **will not be responsible** for exhibits left after February 1, 2017.

9. Food entries (except for the Dairy Foods project) needing refrigeration for food safety will not be accepted for judging. **Exhibits requiring refrigeration may only be those entered in the Dairy Foods sub-category. Cream Cheese may be used as an ingredient in the Dairy Foods category ONLY. NOTE: All food entries must include a recipe.**

10. Exhibitors may attach a 3"x 5" index card to their exhibit containing information about themselves and/or their item. This should be information which the exhibitor feels would be helpful to the judges during evaluation.

11. Exhibitors of all Horticulture-Production Plants, Ornamentals (one year or annuals) **MUST** attach a 3"x 5" index card to their exhibit(s), indicating the following information: (a) an identification of their item, (b) when the item was acquired (purchased or gift), (c) how long the member has cared for the item, and (d) when the item was potted in the present container. All containers must be lined or have a saucer to prevent water leakage. **Plants must be maintained by the exhibitor (i.e. watering).**

12. All judging is based on the Danish System. Each exhibit is judged on its own merit, taking into consideration the age of the exhibitor, the number of years in 4-H, and the number of years in the project. **The decision of the judges is final.**

13. **Premium money earned from entries will be available after Tuesday, January 17, 2017 in the Fair Financial Office.** Only the exhibitor or his/her parent or guardian can collect premium money.

14. If blue ribbon winners have their pictures taken by the Bradenton Herald during the fair, remember to indicate that you won your ribbon(s) in the 4-H Department and to name the projects (i.e. Clothing & Textiles, Food Preservation, Arts & Crafts, Woodworking, etc.) in which you won your ribbon(s).

15. **Arts & Crafts items** (i.e. Jewelry, Ornaments, small pieces of Woodworking, Foams, etc.) containing 2 or more pieces, will be counted as one entry (a set).

Honey / Apiary General Rules

Only registered 4-H members may enter. The Manatee County 4-H Office reserves the right to limit the number of entries on a first-come, first-admitted basis. Contestants may enter in any or all classes but may enter only once per class.

- All honey and beeswax entries must have been produced by the submitter within the last 12 months. All the other exhibits must be done since last fair.
- All entries for honey and candles except the black jar class must be submitted in triplicate: i.e., three matching jars of honey, three boxes of cut-comb, or three candles.
- Submit extracted honey in standard one-pound queenline jars; either plastic or glass is acceptable.
- Submit chunk honey in standard one-pound chunk honey jars with wide mouths and straight sides. Insert only one piece of comb in jar.
- The sole criterion in the black jar is flavor. Your entry will be placed into black jars by staff.
- Only one jar of honey is needed for entry into the black jar category.
- Submit creamed honey in clear container or jar.
- Beeswax entries must be pure beeswax.
- Art and photography must be presented in a self-standing frame, and each accompanied with a 3"x5" card giving the title and brief "story" about the piece.
- Each gadget must be accompanied by a 3"x5" card explaining its use.
- Do NOT write your name on the products in any way; an identifying code sticker will be assigned to your entry at registration.
- All entries must be submitted on **Saturday, January 7, 2017** during the 4-H exhibit check-in (9:00 a.m.-4:00 p.m.).
- Judging criteria are selected at the discretion of the judge, and decision of judge is final.
- For more information, please contact Bethany Allen-Ford at fcfarmbees@mail.mt.com or the Manatee County 4-H Office at 941.722.4524.

Source: The rules for the Manatee County 4-H Honey Competition at the 2014 Manatee County Fair were adapted from the University of Florida's 2011 Bee College Honey Show Rules.

Project Game Boards

One entry per member

1. Maximum size for game boards will be 15"x 20". Boards may be cut into shapes, but no larger than 15"x 20."
2. Game boards must be designed to run on no larger than a 6 volt lantern battery.
3. Boards may be painted, drawn with pencils, markers, or any other craft technique.
4. Each board must contain only one game and not be part of a series of boards.
5. Boards may be 3 dimensional; however, they must not have sharp objects sticking out, or pieces attached that may be removed or fall off.
6. No computer or professional graphics and/or lettering are allowed.
7. If constructed of brown cardboard, the front of the game board must be covered with poster board, wall paper, or other similar materials.
8. All game boards must be made of lightweight plywood or foam board with simple or advanced wiring circuits.
9. Game boards will be judged on educational quality, promotional and artistic appeal, originality, and uniqueness.

Club Table Decoration

One entry per club

1. Clubs must set up their table during exhibit check-in on **January 7, 2017.**
2. Clubs will provide a standard size card table setting for four.
3. Table setting display will be for a special theme or event.
4. Entire setting should follow the theme for the special event.
5. Table display must include a complete table setting with centerpiece.
6. Table arrangement must be designed, constructed, and assembled for display by the club members with guidance only from club leaders.
7. Judging will be based on creativity, appeal, appearance, and arrangement.
8. Disposable or non-breakable dishes and glassware are required.



Food Preservation - Canning & Freezing

1. Entries can be pickles, preserves, jams, jellies, vegetables, etc.
2. Standard clear canning jars with new lid must be used.
3. The entry must be labeled with the name of item and date preserved.
4. One entry = 1 jar or freezer container.
5. Attach a 3"x 5" index card with the recipe and canning procedure to the entry.



Project or Club Display Boxes

One entry per member/One entry per club

1. Display box cannot be larger than 12 inches tall, 18 inches wide, and 10 inches deep.
2. Display box should have a full back, bottom, slanted sides, and no top.
3. Display box must be educational in content and tell your project or club story.
4. Judging is based on informative value, appeal, appearance, originality, quality, and arrangement.
5. Display box must be designed, constructed, and displayed by the 4-H member(s) entering the exhibit.

Project Essay Entries

1. Essay entries shall be limited to one per member.
2. Each essay shall be hand-written, printed, or typed (double-spaced on plain paper) and be an original work of the member.
3. Essays will be judged on composition (organization of material, grammar, spelling, and clarity of expression), appeal (creativity, storytelling impact), and 4-H value.



Project Video/CD/DVD Entries

One entry per member

1. 4-H project involvement must be the subject of the video.
2. Videos/CD's/DVD's should be no longer than 12 minutes.
3. Leaders/advisors may help with filming the video entry, but the ideas, scripting, and performances must be done entirely by the 4-H member.
4. Judging will be based on the project message and theme, video composition (organization and clarity of thought), creativity, appeal, and quality of production.



Shooting Sports Exhibit

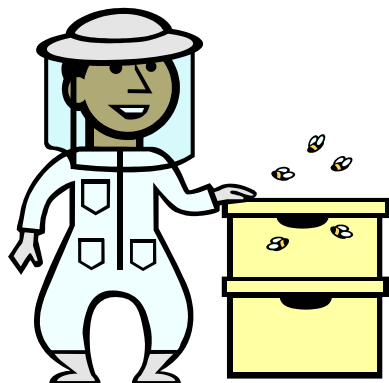
1. Shooting sports exhibits must be educational in content.
2. Exhibit can consist of pictures, scrapbooks, posters, or display box.
3. No firearms, bows, arrows, ammunition or gun powder can be part of the exhibit.

Honey/Apiary

All Manatee County 4-H youth enrolled in the apiary/beekeeping (entomology) projects are encouraged to participate in the 4-H Exhibit at the Manatee County Fair by displaying their honey. This will provide a wonderful opportunity to showcase all of your hard work. The honey-related exhibits will be judged by a certified Welsh Honey Judge. Despite the name, you can submit honey products, and art/photography. A "Best of Show" may be chosen from all of the first place winners. It is important that you read all of the following rules regarding the exhibit. Entries can be disqualified for failure to adhere to any of the following requirements. The decision of the judge is final.

There are 12 show classes:

- | | |
|--------------------------|---|
| 1. extracted honey light | 8. beeswax cake (a single molded piece of two pounds or more) |
| 2. amber | |
| 3. dark | 9. candle (poured or dipped, straight, ornamental) |
| 4. chunk honey | 10. original bee-related photography |
| 5. black jar | 11. original bee-related art |
| 6. cut comb | 12. beekeeping gadgets |
| 7. creamed honey | |



Exhibits with ADDITIONAL SPECIFICATIONS for Entry

Clothing & Textiles

Garments for the Fashion Revue competition will be judged for fit on **Tuesday, January 10, 2017** at 6 p.m. in the 4-H Office. All entries will be judged for construction following the completion of the fit component.

1. Five (5) garments or outfits may be entered. Indicate on the entry tag which garment (if any) is for the Fashion Revue (Fit) competition.
2. All entries must be cleaned, pressed and on a hanger.
3. All entries must be constructed by the exhibitor.
4. Pattern instruction sheets must be attached to the garments, if applicable.
5. "Quickie" sewing projects (made without a pattern) should be designated "without pattern" at time of entry, if applicable.



Personally Sewn: Garment is sewn based on the participant skill level and will be judged accordingly. The garment must have been constructed by the member since the last State Fashion Revue.

Purchased: Garment must have been purchased since the last State Fashion Revue. This category demonstrates the ability to purchase and coordinate an outfit exhibiting positive consumer skills.

Repurposed: The member designs and sews a wearable garment from previously used garments. The garment is different from its original use.

Wearable Art: Decorate a garment using arts and crafts techniques. Duct tape garments are allowed. May take an existing garment and outline a design in sequins beads, etc.

Needle Arts: The member demonstrates their ability to knit, crochet or weave a gar-

ment and coordinate an outfit around the garment.

NEW! 1st Year Sewer: The member must be a 1st year clothing/textile participant without prior sewing experience. Participant will choose one of the above categories and follow the rules and regulations within, but will only be judged in the 1st Year Sewer category.

Food & Nutrition and Food Preparation

1. A recipe with cooking directions must be included on a 3"x 5" index card and attached to the exhibit.
2. Judging is based on **appearance, presentation, texture, and flavor.**
3. Entry must be displayed on/in a disposable container covered with clear plastic wrap.
4. Entries requiring refrigeration will be judged on appearance only.
5. Entry will consist of a whole cake, pie, or coffee cake or a minimum of three (3) cookies, brownies, or candies.
6. Cake decorating effects will be judged for decoration only.
7. Bread entries will consist of one large or one small complete (uncut) loaf or three (3) biscuits or muffins. Quick breads, yeast breads, and specialty breads may be entered.

